



RALLY LIEPAJA 2023

WELCOME TO LATVIA !



QUALIFYING/ PRESS CONFERENCE/ SELECTION of START POSITIONS

- Starts at 16:56(TC)-17:01(SS), last car in PF approx. 18:40 (early arrival allowed)
- Shakedown 18:00-19:30
- **QUA provisional Results approx. 18:50**
- **QUA Final Results approx. 19:20**
- **Cars parked in PF 19:30**
- **Ceremonial start 21.00**
- **Selection of start positions 21:10**

Sertifikāts

Izsniegts

SIA „Kurbads un Ko”

Mazjumpravas iela 24, Rīga, LV-1063, LATVIJA

Bureau Veritas Certification apliecina, ka augstāk minētās organizācijas pārvaldības sistēma ir audītēta un atzīta kā atbilstoša zemāk norādītā pārvaldības sistēmas standarta prasībām

STANDARTS

ISO 9001:2015

SERTIFICĒTĀ DARBĪBAS SFĒRA

AUTOMAŠĪNU TRANSPORTĒŠANA, LOĢISTIKA UN UZGLABĀŠANA.

RALLY CAR TRANSPORTER

Company- KURBADs & co LTD



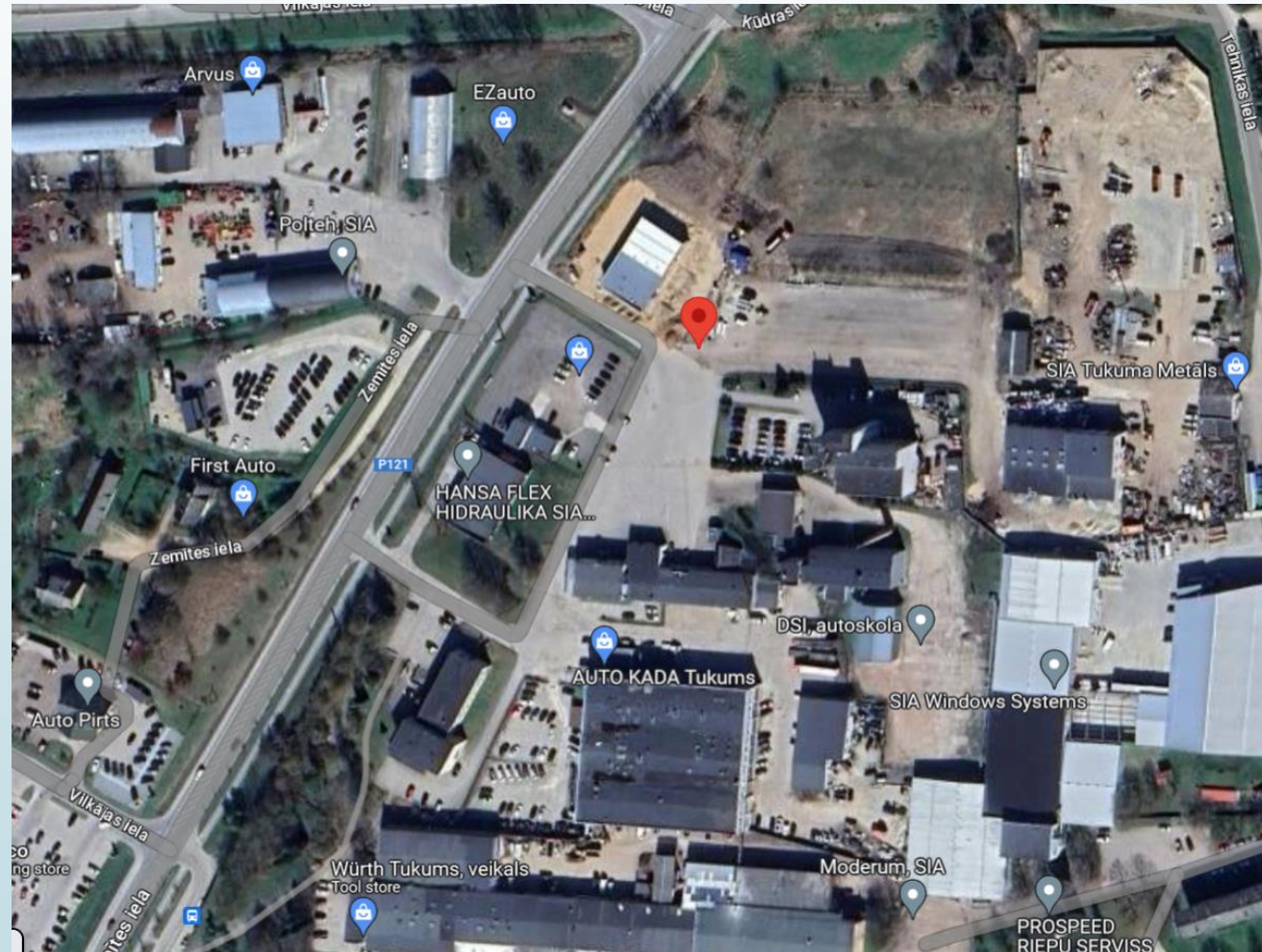
Transportation to TUKUMS : 16.06.2023, Departure at 05:00, arrival 09:00

Loading times from 16.06- 23:00-00:30,

LOADING AREA IN LIEPAJA- trailers park, Zemnieku street **56.518580, 21.022896**

Arrival in unloading at **Tukums – Zemites str.5; 56.954654, 23.120685**

Please sign all 3 CMR pages on box 22, then take one (plus insurance approval), on arrival sign 2 pages on box 24. Please write marks if something is damaged) (You can follow to your car at <https://rc.statusas.com>)



Remote service Talsi

- trailers can be parked in designated place at RSZ;
- procedure RSZ according to the FIA;
- each team has separate place **5*6m**, teams placed together in Liepaja in same way will be placed together in Talsi. Comp. numbers painted on tarmac, you will be guided by the RSZ marshals;
- **drive in RSZ only by officially marked vans; vans arriving, unloading and must be parked on designed parking; other cars will not be allowed in RSZ!**

How look chicanes ?
(consist from the 200l drum, filled with water, and fence, covered by sign);



JUST KIND REMINDER !


no 51 līdz 60km/h

LĪDZ ŠIM		JAUNĀ KĀRTĪBA	
	 120-140€	 240-320€ uz 3 mēn.	
	 140-280€ uz 6 mēn.	 480-640€ uz 6-12 mēn.	
	 140-210€ uz 3 mēn.	 360-460€ uz 6 mēn.	
	 280-430€ uz 6 mēn.	 700-880€ uz 6-12 mēn.	

**!!! Over 50km/h –
and you will loose your license !!!**



Questions- answers:

- We know about the dust, we already monitoring actual situation, and if necessary decisions will follow**
- Tyre change after FP before QUAL- Decision will be made by Stewards, place near the stage start on main road. Follow decisions.**
- Refuel in SP Liepaja possible until 20.30.**
- Tyre marking before TC 0, please arrive min 10 min before.**

- **SS8/10: on recce jump will be marked only with barrels on sides, on rally such a metal construction prepared !**

Page 2-28. box 3



- **SS1/2:**

By FIA Safety delegate's suggestion there is one additional hay bale attached to the stage:

Special Stage Distance:6.20 km

Coordinates:57.07298, 23.11563





GOOD LUCK AND SAFE RALLY!